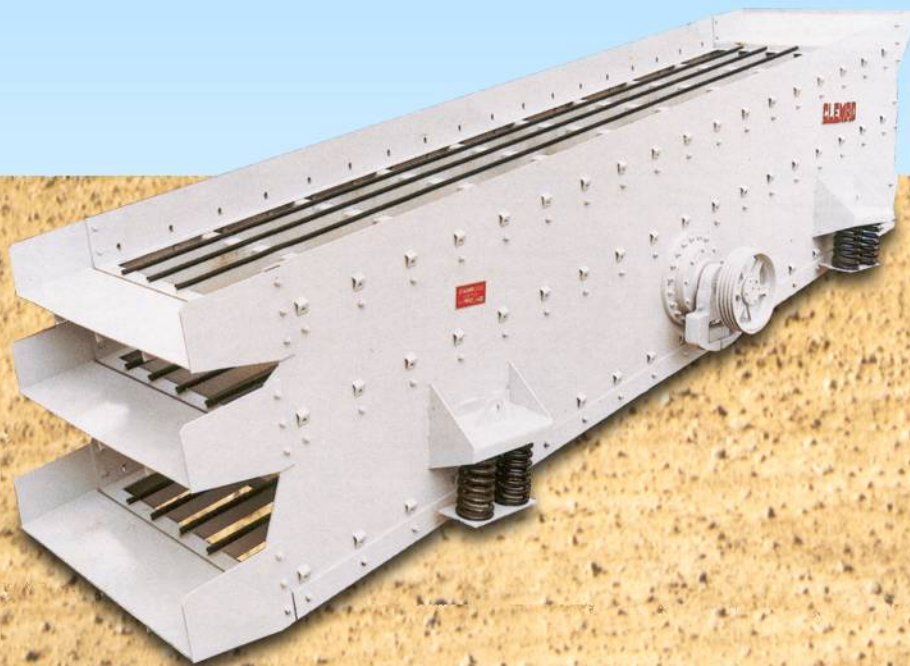


CLEMRO

INCLINED SCREENS

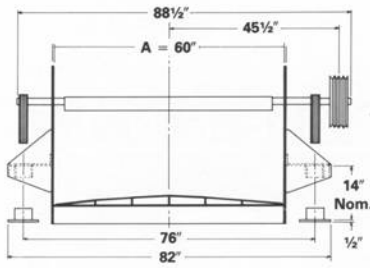


CLEMRO **Western Ltd.**

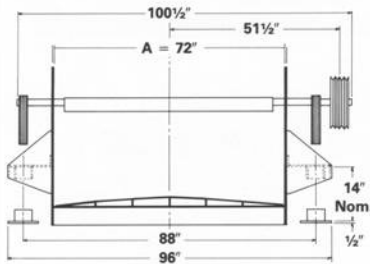
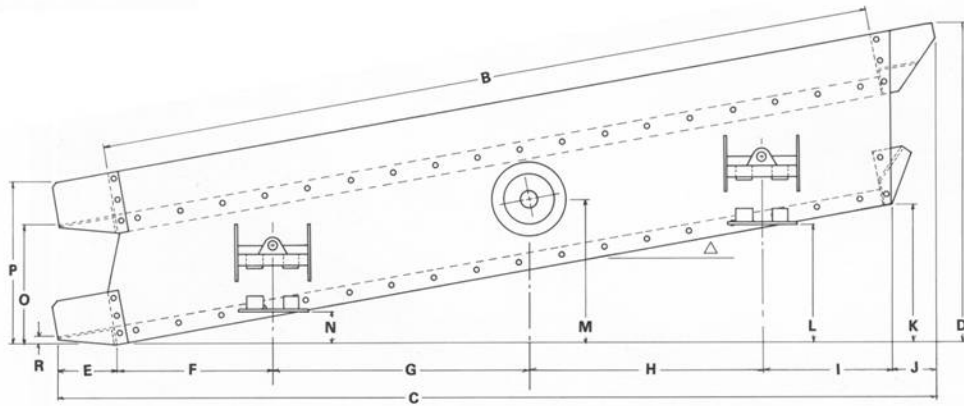
8242-30 STREET S.E., CALGARY, ALBERTA, CANADA T2C 1H8
PHONE: (403) 279-3877 FAX: (403) 236-0186 www.clemro.com



Inclined Screens

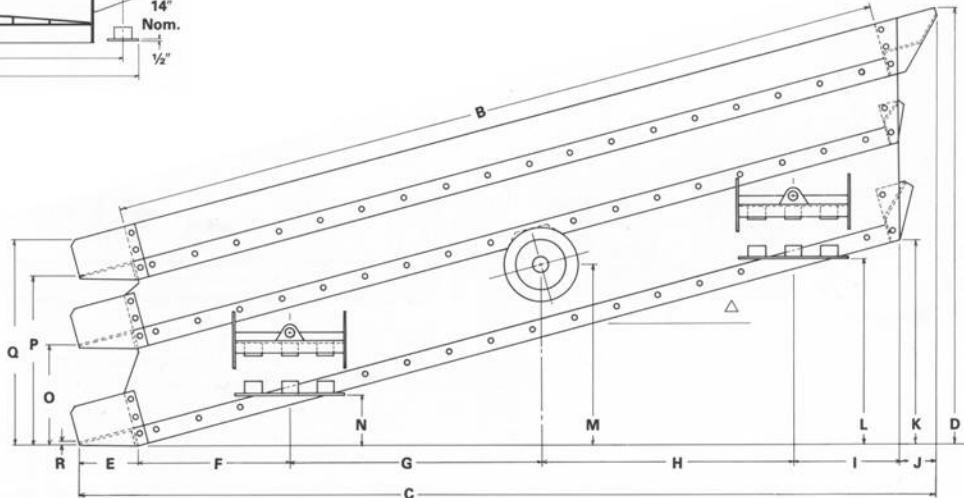


- 1/2" side plates
- Solidly fabricated decks
- Self-aligning 160 mm bearings
- Grease lubricated (optional oil)
- Long service life
Saves in downtime and repair costs
- Replacement parts available from stock
- Grade 8 bolts throughout



Note: Dimensions shown are approximate. Certified drawings are available for construction

Drive Sheave 4C180E (Supplied)
Motor Sheave 4C100E
Belt 4C Power Band



8242 30 Street S.E., Calgary, Alberta, Canada T2C 1H8
Phone: (403) 279-3877 Fax: (403) 236-0186 www.clemro.com





Inclined Screens

2 DECK SCREENS

APPROXIMATE DIMENSIONS

MODEL	A	B	C	D	E	F	G	H	I	J	K	L	M	N	O	P	Q	R	SPRINGS	HP	△	APPROX. WEIGHT.
5x14	60	168	199 ¹ / ₈	80 ¹ / ₂	16 ⁵ / ₈	36	54 ¹ / ₂	54 ¹ / ₂	22 ⁷ / ₈	12 ⁷ / ₈	29 ⁵ / ₈	28 ³ / ₈	36 ¹ / ₄	9 ¹ / ₈	33 ⁵ / ₈	45 ⁷ / ₁₆	—	2 ¹³ / ₁₆	8	30	11°	10694
5x16	60	192	222 ¹ / ₂	84 ⁵ / ₈	16 ⁵ / ₈	40 ³ / ₈	62	62	27 ³ / ₁₆	12 ⁵ / ₈	33 ³ / ₄	31 ³ / ₄	38 ³ / ₈	9 ⁷ / ₈	33 ⁵ / ₈	45 ⁷ / ₁₆	—	2 ¹³ / ₁₆	8	40	11°	11288
5x18	60	216	246 ³ / ₁₆	88 ³ / ₄	16 ⁵ / ₈	44 ³ / ₁₆	70	70	31	12 ⁵ / ₈	38	35 ¹ / ₄	40 ⁷ / ₁₆	10 ¹ / ₂	33 ⁵ / ₈	45 ⁷ / ₁₆	—	2 ¹³ / ₁₆	8	40	11°	11882
6x16	72	192	218 ⁵ / ₈	102 ⁷ / ₈	16 ³ / ₄	39 ³ / ₈	62	62	24 ¹ / ₂	11 ¹ / ₂	50 ³ / ₈	44 ⁷ / ₈	47 ⁷ / ₈	11 ¹¹ / ₁₆	32 ³ / ₄	44 ³ / ₈	—	5 ⁵ / ₈	8	40	11°	13040
6x18	72	216	241 ⁷ / ₈	109	16 ³ / ₄	43	70	70	28 ¹ / ₁₆	11 ¹ / ₂	56 ¹ / ₂	52 ¹ / ₈	51	14 ⁵ / ₈	32 ³ / ₄	44 ³ / ₈	—	5 ⁵ / ₈	8	50	11°	13392
6x20	72	240	265	115 ¹ / ₄	16 ³ / ₄	46 ¹ / ₂	78	78	31 ⁵ / ₈	11 ¹ / ₂	62 ³ / ₄	57 ³ / ₈	54	15 ⁹ / ₁₆	32 ³ / ₄	44 ³ / ₈	—	5 ⁵ / ₈	12	50	11°	13740

Other Sizes and Styles On Request

3 DECK SCREENS

APPROXIMATE DIMENSIONS

MODEL	A	B	C	D	E	F	G	H	I	J	K	L	M	N	O	P	Q	R	SPRINGS	HP	△	APPROX. WEIGHT.
5x14	60	168	199 ¹ / ₈	92 ³ / ₄	16 ³ / ₄	35 ¹ / ₄	54 ¹ / ₂	54 ¹ / ₂	23 ⁵ / ₈	12 ³ / ₄	29 ⁵ / ₈	28 ³ / ₁₆	36 ¹ / ₈	9	29	47 ⁷ / ₈	57 ⁵ / ₈	2 ¹³ / ₁₆	8	30	11°	13050
5x16	60	192	222 ³ / ₄	96 ¹⁵ / ₁₆	16 ³ / ₄	39 ⁹ / ₁₆	62	62	28	12 ³ / ₄	33 ³ / ₄	31 ⁵ / ₈	38 ¹ / ₄	9 ³ / ₄	29	47 ⁷ / ₈	57 ⁵ / ₈	2 ¹³ / ₁₆	8	40	11°	13931
5x18	60	216	246 ¹ / ₄	101	16 ³ / ₄	43 ³ / ₈	70	70	31 ³ / ₄	12 ³ / ₄	38	35 ¹ / ₈	40 ³ / ₈	10 ⁷ / ₁₆	29	47 ⁷ / ₈	57 ⁵ / ₈	2 ¹³ / ₁₆	8	40	11°	14716
6x16	72	192	218 ⁵ / ₈	115 ³ / ₈	16 ³ / ₄	38 ¹ / ₄	62	62	25 ⁵ / ₈	11 ¹ / ₂	50 ³ / ₈	46 ⁹ / ₁₆	47 ¹ / ₂	13 ³ / ₈	28 ¹ / ₈	47 ¹ / ₄	57	5 ⁵ / ₈	12	40	11°	15646
6x18	72	216	241 ⁷ / ₈	121 ¹ / ₂	16 ³ / ₄	41 ³ / ₄	70	70	29 ¹ / ₄	11 ¹ / ₂	56 ⁹ / ₁₆	51 ⁷ / ₈	50 ⁵ / ₈	14 ¹ / ₄	28 ¹ / ₈	47 ¹ / ₄	57	5 ⁵ / ₈	12	50	11°	16526
6x20	72	240	265	127 ⁷ / ₈	16 ³ / ₄	45 ³ / ₈	78	78	32 ⁷ / ₈	11 ¹ / ₂	62 ³ / ₄	57 ¹ / ₁₆	53 ³ / ₄	15 ¹ / ₄	28 ¹ / ₈	47 ¹ / ₄	57	5 ⁵ / ₈	12	50	11°	17306

Other Sizes and Styles On Request



8242 30 Street S.E., Calgary, Alberta, Canada T2C 1H8
 Phone: (403) 279-3877 Fax: (403) 236-0186 www.clemro.com





Inclined Screens

ESTIMATING CAPACITIES OF CLEMRO VIBRATING SCREENS

To get a reasonable estimate of tons per hour that can be screened through the size mesh you are considering. Multiply the estimated capacity by the factors affecting your operation, and by the number of square feet of screen deck involved.

$$\text{TPH through deck} = \text{TPH per Sq. Ft.} \times \text{A} \times \text{B} \times \text{C} \times \text{D} \times \text{E} \times \text{W} \times \text{Area of Deck}$$

Capacity in TPH Per Square Foot of Gradation Screen

SIZE OF MESH	3/32 (#8)	3/16 (#4)	1/4	3/8	1/2	5/8	3/4	7/8	1	1 1/4	1 1/2	1 3/4	2	2 1/2	3	3 1/2	4
CLOSED CYCLE	0.85	1.50	1.90	2.45	2.95	3.45	3.85	4.20	4.45	5.05	5.60	6.00	6.45	7.10	7.70	8.10	8.40
OPEN CYCLE	0.65	1.10	1.35	1.70	2.05	2.40	2.70	2.95	3.10	3.55	3.90	4.20	4.50	4.95	5.40	5.65	5.90

Factors Affecting Capacity of Vibrating Screens

FACTOR A		FACTOR B		FACTOR C		FACTOR D		FACTOR E	
Amount of agg. fed to deck less than 1/2 screen opening		Est. percent of oversize fed screen		With water spray directly on screen		Correcting for No. of screening decks above		Type of Material	
								Description	Factor E
Amt.	Factor A	Amt.	Factor B	Screen Opg.	Factor C	Deck	Factor D		
0%	0.40	3/32	2.60	10%	1.07			1. Uncrushed gravel—Free flowing—Max. 5% moisture	1.15
5	0.47	20	1.04	3/32	2.60	Top	1.0	Uncrushed gravel—Moist and dirty	0.85*
10	0.53	30	1.00	3/16	2.50	Second	0.90		
15	0.59	40	0.95	1/4	2.40	Third	0.80	2. 50% crushed gravel—Free flowing—Max. 5% moisture	1.00
20	0.66	50	0.90	3/8	2.10	Fourth	0.70	50% crushed gravel—Moist and dirty	0.70
25	0.73	60	0.85	1/2	1.85				
30	0.82	70	0.79	3/4	1.50			3. 100% crushed gravel or rock—Free flowing —	
35	0.90	80	0.70	1	1.15			Max. 5% moisture	0.90
40	1.00	90	0.55	1 1/8	1.10			100% crushed rock—With dirt—Moist and dirty	0.60*
45	1.10	92	0.50					100% crushed rock—Laminar or slabby	0.60
50	1.20	94	0.44						
55	1.30	96	0.35						
60	1.40	98	0.20						
65	1.50	100*	0.00						
70	1.60								
80	1.80								
90	1.92								
100	2.00								
W									
Weight of Material									
lb / ft ³ / 100									

*General Specifications

Capacities shown are neither maximum nor minimum. Factors that may affect capacity and product analysis include feed gradation, moisture content, friability and method of feeding. Minimum CSS (discharge openings) shown are not necessarily applicable to all installations.



8242 30 Street S.E., Calgary, Alberta, Canada T2C 1H8
 Phone: (403) 279-3877 Fax: (403) 236-0186 www.clemro.com

